

30601 Carter Street • Solon, Ohio 44139  
Phone: 440-248-3700 • Fax: 440-248-1324

## MATERIAL SAFETY DATA SHEET

IN CASE OF EMERGENCY, CALL CHEMTREC AT 1-800-424-9300.

1. PRODUCT IDENTIFICATION: MATRIX® COLORS - FACES - This MSDS covers all Matrix Essentials, Inc., Velvette™ Treatment Blush.
2. COMPOSITION / INFORMATION ON INGREDIENTS: These products contain no substances regulated as hazardous, carcinogenic, or toxic by Federal Law or regulation.
3. HAZARDS IDENTIFICATION:

### EMERGENCY OVERVIEW

When used according to instructions and professional training, the products applicable to this MSDS are safe and present no immediate or long-term health hazard. However, abnormal entry routes, such as gross ingestion, may require immediate medical attention.

### POTENTIAL HEALTH AFFECTS

EYE CONTACT:	Mild and temporary irritation.
SKIN CONTACT:	No irritation
INHALATION:	None known.
INGESTION:	None known.

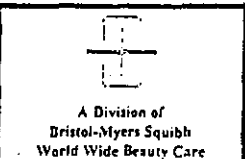
4. FIRST AID MEASURES:

IN CASE OF EMERGENCY, CALL CHEMTREC AT 1-800-424-9300.

EYE CONTACT:	Rinse well with water for several minutes or until irritation subsides. Seek medical attention.
SKIN CONTACT:	Not applicable.
INHALATION:	Not applicable.
INGESTION:	Abnormal entry route. Seek medical assistance or call POISON CONTROL CENTER

5. FIRE FIGHTING MEASURES

FLASHPOINT:	Not determined.
HAZARDOUS COMBUSTION BY-PRODUCTS:	None known.
SPECIAL FIRE CONTROL MEASURES:	None.



30601 Carter Street • Solon, Ohio 44139  
 Phone: 440-248-3700 • Fax: 440-248-1324

- 6. ACCIDENTAL RELEASE MEASURES: No special requirements. Use normal housekeeping practices.
- 7. HANDLING AND STORAGE Store at normal room temperature. Use older lots first. Avoid freezing conditions.
- 8. EXPOSURE CONTROLS / PERSONAL PROTECTION:
  - EYE PROTECTION: Not Applicable
  - SKIN PROTECTION: Not Applicable
  - RESPIRATORY PROTECTION: Not Applicable
- 9. PHYSICAL AND CHEMICAL PROPERTIES Not Applicable
- 10. STABILITY AND REACTIVITY: Stable and non-reactive under normal usage.
- 11. TOXICOLOGICAL INFORMATION: See ingredient information under section 2.
- 12. ECOLOGICAL AND DISPOSAL CONSIDERATIONS: No ecological or special considerations when disposed of according to local, state, and Federal regulations.
- 13. TRANSPORT INFORMATION: Products are shipped as consumer commodities when transported by truck. Air or ship transport may require reclassification.
- 14. REGULATORY AND OTHER INFORMATION: Matrix Essentials, Inc. products comply with current FDA regulations. Matrix Essentials, Inc. participates in the FDA voluntary ingredient registration and cosmetic reporting programs.

**REASON FOR ISSUE:** Added World Wide Beauty Care MSDS #24B; new area code.  
**SUPERSEDES MSDS DATED:** 06/01/92

**DISCLAIMER**

The information provided on this Material Safety Data Sheet (MSDS) is believed by Matrix Essentials, Inc. to be accurate based upon data available at the time the MSDS was prepared. The information on this MSDS is intended to cover the normal and customary use of the products and may not be applicable to all situations or to all individuals. Please consult the instructions accompanying the products. This MSDS does not constitute a warranty of the products it covers.