

30601 Carter Street • Solon, Ohio 44139
Phone: 440-248-3700 • Fax: 440-248-1324

MATERIAL SAFETY DATA SHEET

IN CASE OF EMERGENCY, CALL CHEMTREC AT 1-800-424-9300.

- 1. PRODUCT IDENTIFICATION:** COLOGNES - This MSDS covers Matrix Essentials, Inc. ICON Cologne.
- 2. COMPOSITION / INFORMATION ON INGREDIENTS:** This product contains the following:

CTFA NAME: SD Alcohol 40 (Alcohol Denat.)	CAS #: 64-17-5	EXPOSURE LIMITS: 1000 ppm TLV, PEL (Ethyl Alcohol)
--	--------------------------	--

3. HAZARDS IDENTIFICATION:

EMERGENCY OVERVIEW
When used according to instructions and professional training, the products applicable to this MSDS are safe and present no immediate or long-term health hazard. However, abnormal entry routes, such as ingestion, may require immediate medical attention.

POTENTIAL HEALTH AFFECTS

EYE CONTACT:	Temporary mild to severe irritation.
SKIN CONTACT:	No irritation or reaction expected.
INHALATION:	Normally no reaction. Extreme overexposure or use without ventilation could cause light headedness leading to unconsciousness.
INGESTION:	Potential nausea or vomiting.

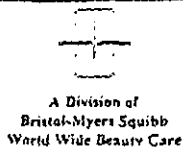
4. FIRST AID MEASURES:

IN CASE OF EMERGENCY, CALL CHEMTREC AT 1-800-424-9300.

EYE CONTACT:	Rinse well with water until irritation subsides. Seek medical attention if symptoms persist.
SKIN CONTACT:	Rinse with water. No first aid normally required.
INHALATION:	Inhalation would be very abnormal. Clear passages and proceed according to symptoms. Get medical attention.
INGESTION:	Give plenty of water and get medical attention.

5. FIRE FIGHTING MEASURES

FLASHPOINT:	55 - 72°F/13-22°C TCC Method.
HAZARDOUS COMBUSTION BY-PRODUCTS:	Decomposition may produce carbon monoxide.
SPECIAL FIRE CONTROL MEASURES:	Alcohol may provide additional fuel for fire.



30601 Carter Street • Solon, Ohio 44139
Phone: 440-248-3700 • Fax: 440-248-1324

6. ACCIDENTAL RELEASE MEASURES: Use normal industrial housekeeping practices. Do not store spilled material in open containers or near heat sources or flames.
7. HANDLING AND STORAGE: Store at normal room temperature. Use older lots first. Avoid freezing conditions.
8. EXPOSURE CONTROLS / PERSONAL PROTECTION:
- | | |
|-------------------------|---|
| EYE PROTECTION: | None required under normal conditions. Avoid contact with eyes. |
| SKIN PROTECTION: | None required under normal conditions of use. |
| RESPIRATORY PROTECTION: | None required under normal conditions of use. |
9. PHYSICAL AND CHEMICAL PROPERTIES: Not Applicable.
10. STABILITY AND REACTIVITY: Exposure to heat or flame can cause container explosion.
11. TOXICOLOGICAL INFORMATION: See ingredient information under section 2.
12. ECOLOGICAL AND DISPOSAL CONSIDERATIONS: No ecological or special considerations when disposed of according to local, state, and Federal regulations.
13. TRANSPORT INFORMATION: Products are shipped as consumer commodities when transported by truck. Air or ship transport may require reclassification.
14. REGULATORY AND OTHER INFORMATION: Essentials Actrol® Shampoo is classified as an over-the-counter (OTC) drug product. Other products comply with current FDA regulations. Matrix Essentials, Inc. participates in the FDA voluntary ingredient registration and cosmetic reporting programs.

REASON FOR ISSUE:
SUPERSEDES MSDS DATED:

Added World Wide Beauty Care MSDS #16; new area code.
06/25/97

DISCLAIMER

The information provided on this Material Safety Data Sheet (MSDS) is believed by Matrix Essentials, Inc. to be accurate based upon data available at the time the MSDS was prepared. The information on this MSDS is intended to cover the normal and customary use of the products and may not be applicable to all situations or to all individuals. Please consult the instructions accompanying the products. This MSDS does not constitute a warranty of the products it covers.